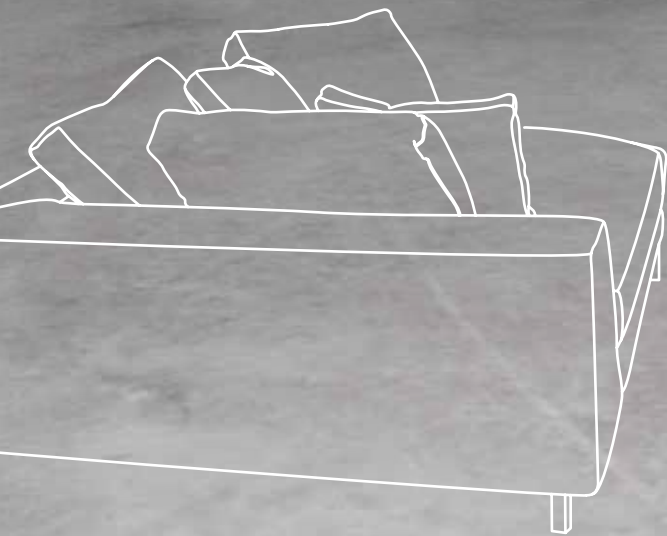


INTERIOR LIVING



by
ULTRATOP[®]
LOFT





ABITARE, ACCOGLIERE, LAVORARE. IN AMBIENTI DI PRESTIGIO. LA CREAZIONE DELLE **GIUSTE ATMOSFERE** È FRUTTO DI SCELTE ESTETICHE E COMPOSITIVE CHE METTONO IN RISALTO **ESSENZIALITÀ E PERSONALITÀ**. DUE CARATTERI CHE POSSONO PERFETTAMENTE CONVIVERE. LE SUPERFICI **CEMENTIZIE** RAPPRESENTANO **UN'OPPORTUNITÀ ORIGINALE** PER ANDARE OLTRE LE CONVENZIONI. PER QUESTO MAPEI HA PENSATO AD UNA PROPOSTA INNOVATIVA E DEDICATA, NELLA QUALE TONI, LINEARITÀ E RISULTATO DIVENTANO MATERIA VITALE PER L'INTERIOR DESIGN CONTEMPORANEO. CON UN VANTAGGIO IN PIÙ: LA **MASSIMA AFFIDABILITÀ** IN TUTTE LE CONDIZIONI. GRAZIE AD **ELEVATE CARATTERISTICHE PRESTAZIONALI** DI RESISTENZA MECCANICA E ALL'ABRASIONE NELLA REALIZZAZIONE DI SUPERFICI CONTINUE, SENZA INTERRUZIONI.

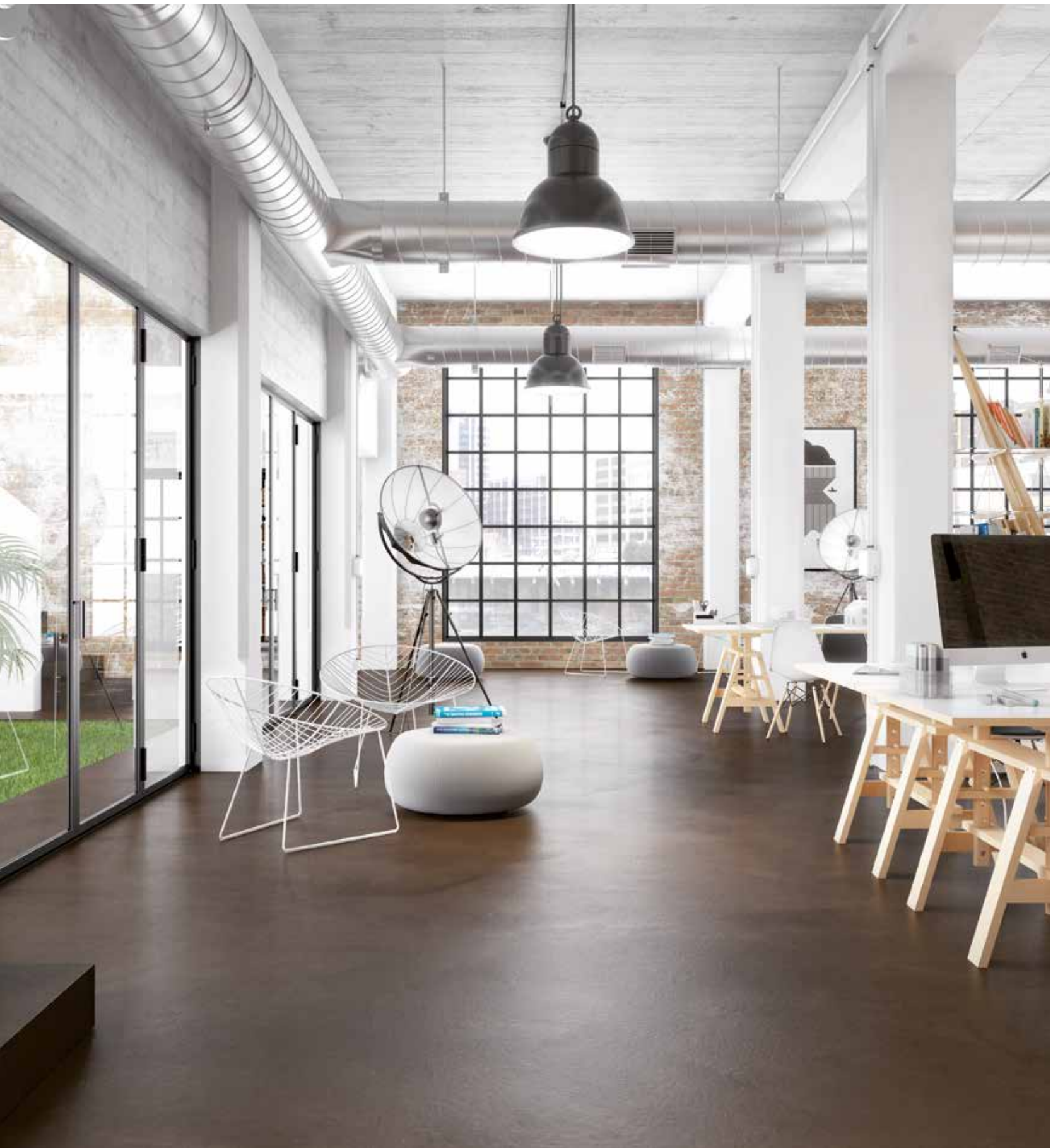
*LIVING, WELCOMING AND WORKING. IN PRESTIGIOUS ENVIRONMENTS. CREATING THE **RIGHT ATMOSPHERE** IS THE RESULT OF AESTHETIC AND COMPOSITIONAL CHOICES THAT HIGHLIGHT **ESSENTIALITY AND PERSONALITY**. TWO CHARACTERISTICS THAT CAN LIVE TOGETHER IN PERFECT HARMONY. **CEMENTITIOUS** SURFACES REPRESENT AN **ORIGINAL OPPORTUNITY** TO GO BEYOND ROUTINE CONVENTIONS. THIS IS WHAT LIES BEHIND MAPEI'S IDEA FOR A DEDICATED, INNOVATIVE PROPOSAL, IN WHICH SHADES, LINEARITY AND END RESULTS BECOME THE VITAL LYMPH OF CONTEMPORARY INTERIOR DESIGN. WITH AN ADDED ADVANTAGE: **MAXIMUM RELIABILITY**, WHATEVER THE LEVEL OF FOOT TRAFFIC, IN CIVIL SURROUNDINGS. THANKS TO ITS **HIGH PERFORMANCE** CHARACTERISTICS OF MECHANICAL AND ABRASION RESISTANCE IN CREATING CONTINUOUS, WITHOUT INTERRUPTION FLOORINGS.*

WORK SPACES

IL CONCETTO DI LIBERTÀ PUNTA DECISAMENTE A COINVOLGERE PAVIMENTI E PARETI, CHE VIVONO DI UN FORTE IMPATTO MATERICO. DAGLI SPAZI DI LAVORO A QUELLI DEL RELAX, LA VISIONE CONQUISTA ORIZZONTI AMPI E ARMONICI CHE, MENTRE CREANO PERSONALITÀ, SALVAGUARDANO L'ARMONIA COMPOSITIVA. UNA CONTINUITÀ CHE SI RINNOVA ANCHE NEL DIALOGO FRA INTERNI ED ESTERNI.

THE CONCEPT OF LIBERTY AIMS FOR ABSOLUTE INVOLVEMENT BETWEEN FLOORS AND WALLS WHICH COME TO LIFE WITH A MARKED MATERIC IMPACT. FROM WORK SPACES TO RELAXATION AREAS, OUR VIEW CONQUERS WIDER, MORE HARMONIOUS HORIZONS WHICH, WHILE CREATING THEIR OWN PERSONALITY, SAFEGUARD THEIR OVERALL COMPOSITIONAL HARMONY. CONTINUITY WHICH IS THEN RENEWED THROUGH A DIALOGUE BETWEEN INTERIORS AND EXTERIORS.

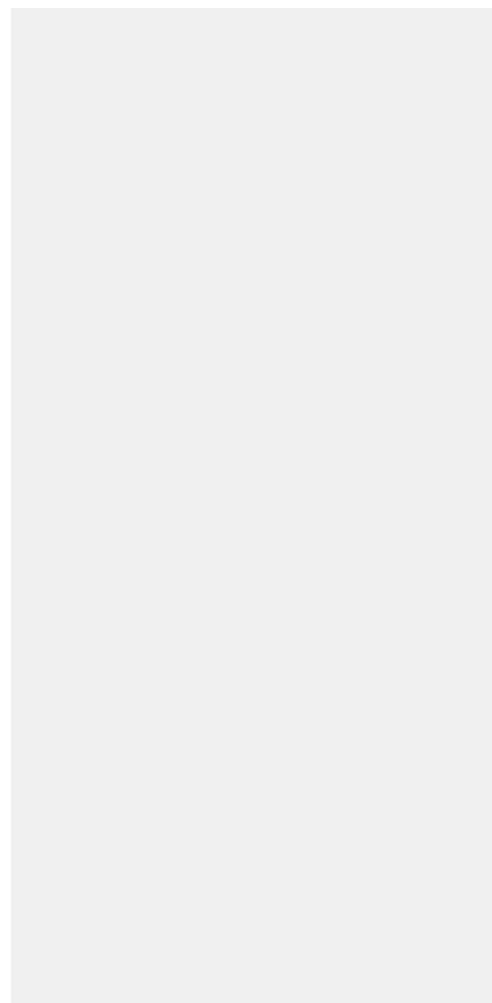




SHOWROOMS

Che si tratti di alta moda, auto sportive o preziose rarità enologiche, il tratto unificante è l'atmosfera che l'architettura sa realizzare. Il contrappunto estetico fra pavimenti e pareti coinvolge anche gli elementi di merchandising e le soluzioni illuminotecniche, in un dialogo armonioso.

Whether they be they for displaying haute couture, sports cars or rare, precious wines, their unifying feature is the atmosphere that architecture is capable of creating. The aesthetic counterpoint between floors and walls also involves merchandising features and lighting displays, in a harmonious dialogue.





A L B E R G H I E R I S T O R A N T I

Il mondo del gusto è sempre più spazio privilegiato di creatività architettonica e i luoghi del convivio aggiungono il piacere della vista a quelli del palato. I singoli ambienti regalano forza espressiva alla tavola, che poggia su superfici dove toni, texture e cromie incantano, qualificano, distinguono.



H O T E L S & R E S T A U R A N T S

The finer things in life increasingly provide privileged spaces for architectural creativity and meeting and gathering places can now add visual pleasure to those of the palate. Each individual surrounding offers an expressive force to the dining table, resting on surfaces where tones, textures and colours combine to charm, define and distinguish.





SPA CENTRES

NUOVI TEMPLI DEL BENESSERE, FANNO DELLA VISIONE, DEL COINVOLGIMENTO EMOZIONALE UNA PARTE ESSENZIALE DELLA LORO OFFERTA. CON UN ESERCIZIO CREATIVO IN PIÙ: IL DIALOGO CON L'ACQUA. LA CULTURA ANTICA DELLE TERME SI SPOSA A PERCORSI ORIGINALISSIMI. L'ARMONIA DELLE SUPERFICI È ALLA BASE DEL LORO FASCINO, TATTILE OLTRE CHE VISIVO.

NEW TEMPLES OF WELLBEING MAKE THE VIEW AND EMOTIONAL INVOLVEMENT AN ESSENTIAL PART OF WHAT IS ON OFFER. WITH AN ADDED CREATIVE EXERCISE: ITS DIALOGUE WITH THE WATER. THE ANTIQUE CULTURE OF SPA CENTRES COMBINES WITH HIGHLY ORIGINAL PATHS. THE HARMONY OF THE SURFACES IS AT THE ROOT OF THEIR CHARM, TACTILE AS WELL AS VISUAL.







Livelli differenti nella stessa cornice compositiva, con presenza di scale e strutture ascensionali, chiedono al progetto nuove armonie. Le scelte estetiche delle superfici orizzontali possono essere riprese anche in verticale e negli elementi d'arredo, per ottenere una sorprendente continuità espressiva.



SPAZI ABITATIVI CON COMPLEMENTI D'ARREDO

LIVING SPACES WITH FURNISHINGS



Different levels within the same compositional framework, with stairs and lift structures that require a new harmony within their design. The aesthetic choices for horizontal surfaces may also be incorporated vertically and in furnishings, to create surprisingly expressive continuity.

vantaggi **advantages**

- Per tutte le superfici:
in orizzontale, in verticale e a soffitto
 - Superfici nuvolate,
monocromatiche o tono su tono
 - Pigmentabile con infiniti effetti cromatici
 - Di facile preparazione ed applicazione
 - Buona resistenza meccanica e
all'abrasione
 - Adatto ad ambienti residenziali
e commerciali con traffico pedonale
 - Per il ripristino di superfici esistenti
e per la realizzazione di nuovi rivestimenti
 - Resistente ai raggi UV
 - Gradevole al tatto
 - Effetto materico/creativo
 - Facile da pulire
 - Essenziale, moderno, sobrio
 - Di facile manutenzione
- *For all types of surface:
horizontal, vertical and ceilings*
 - *Nuvolato effect, monochromatic
or tone on tone*
 - *Mixable into an infinite array of colours*
 - *Simple preparation and application*
 - *High strength and resistance
to abrasion*
 - *Suitable for residential surroundings and
commercial areas with intense foot traffic*
 - *For repairing existing surfaces and
creating new coatings*
 - *Resistant to UV rays*
 - *Pleasant to the touch*
 - *Textured/creative tactile effect*
 - *Easy to clean*
 - *Essential, modern, sober*
 - *Easy maintenance*

principali destinazioni d'uso

main areas of use



**Ambienti ad uso
residenziale e
complementi
d'arredo**
Residential settings



**Spazi wellness
e Spa**
*Wellness and spa
centres*



**Esercizi
commerciali
e negozi**
*Commercial
areas*



**Musei e
gallerie**
*Museums and
art galleries*



**Ristoranti e
hall di hotel**
*Restaurants and
Hotel lobbies*



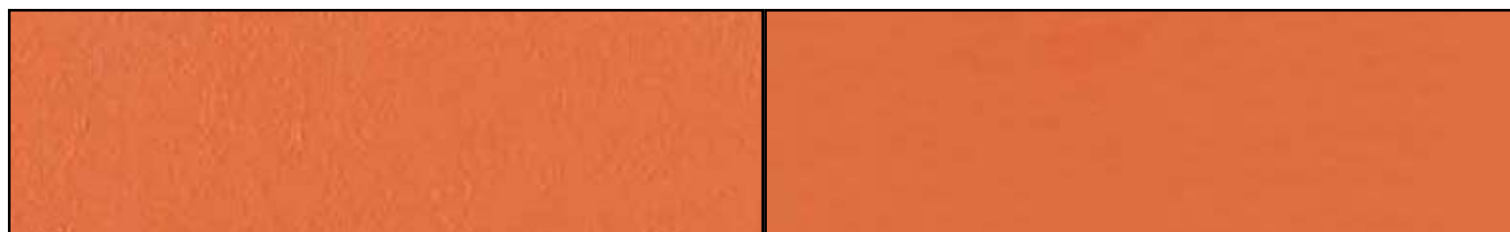
Scale
Stairways

**CARTELLA
COLORI**

***COLOUR
CHART***

ARANCIO

base bianca
white base



F

SAHARA OR

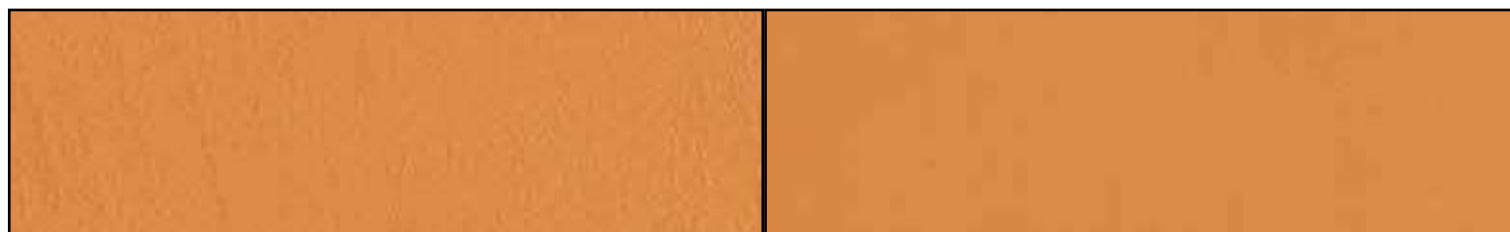
W



F

GOBI OR

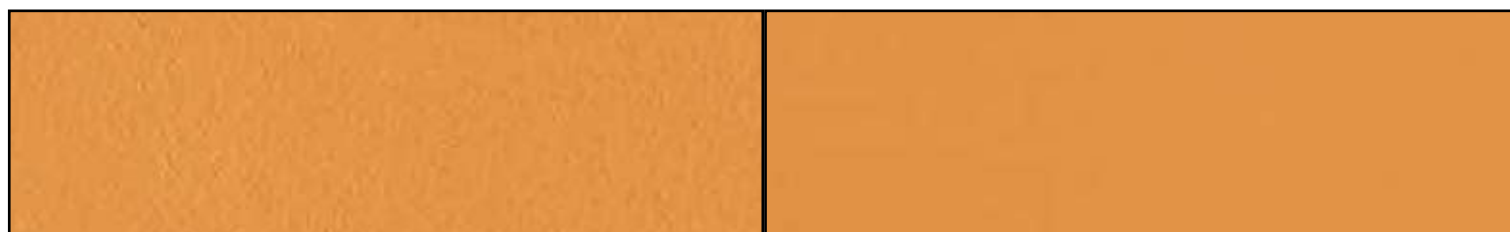
W



F

MOAB OR

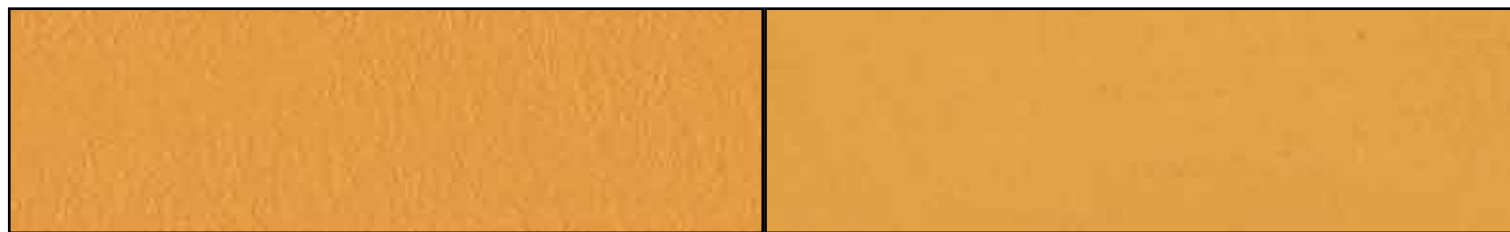
W



F

KAVIR OR

W



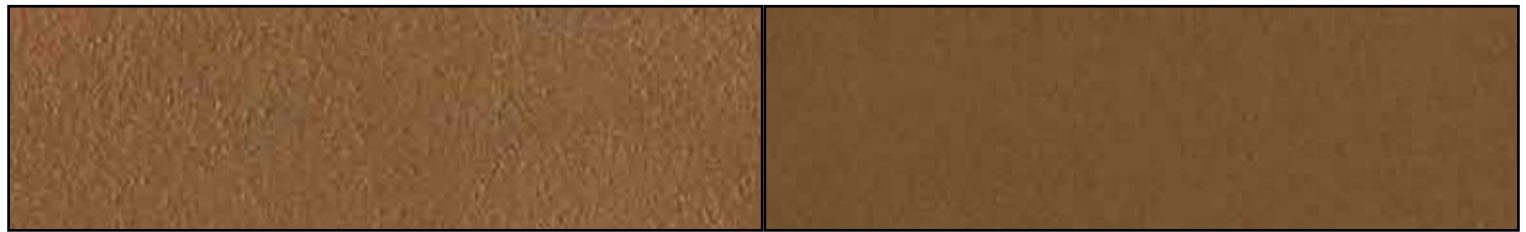
F

SONORA OR

W

ORANGE

base natural
natural base



F

SAHARA OR

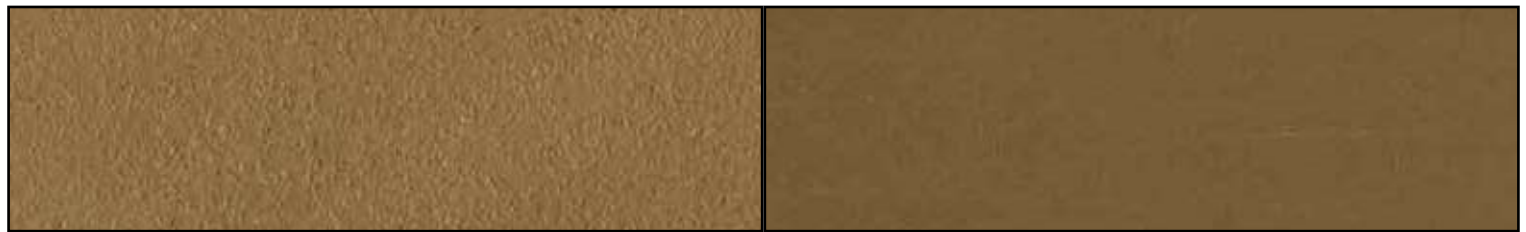
W



F

GOBI OR

W



F

MOAB OR

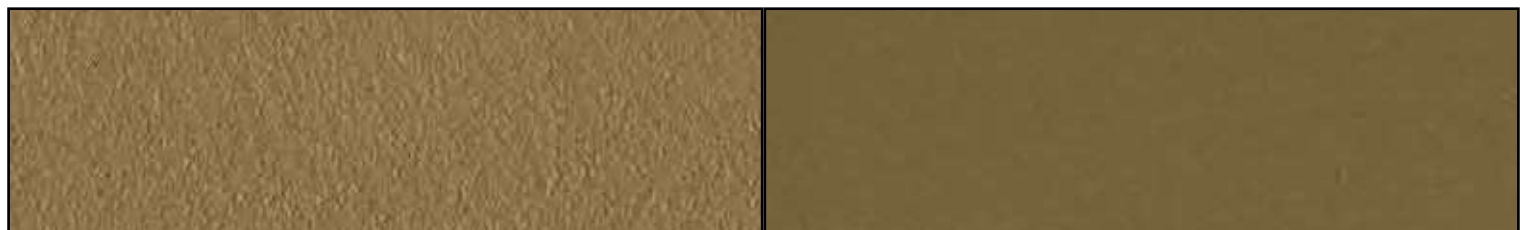
W



F

KAVIR OR

W



F

SONORA OR

W

base bianca
white base



F

CUBA BL

W



F

HAWAII BL

W



F

ZANTE BL

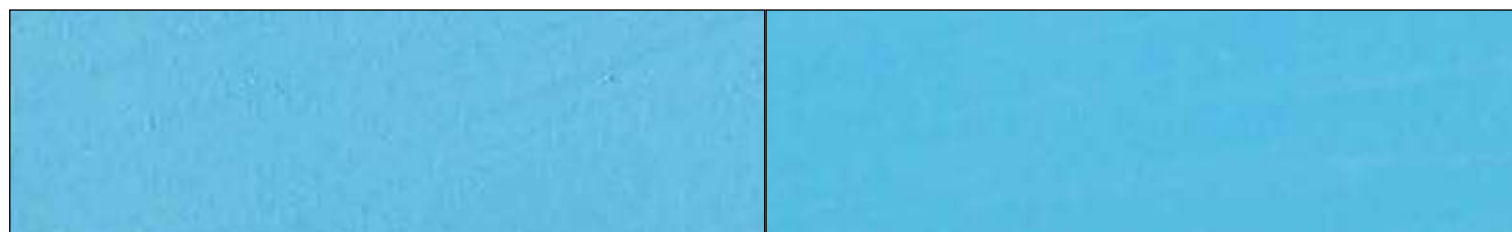
W



F

THAITI BL

W



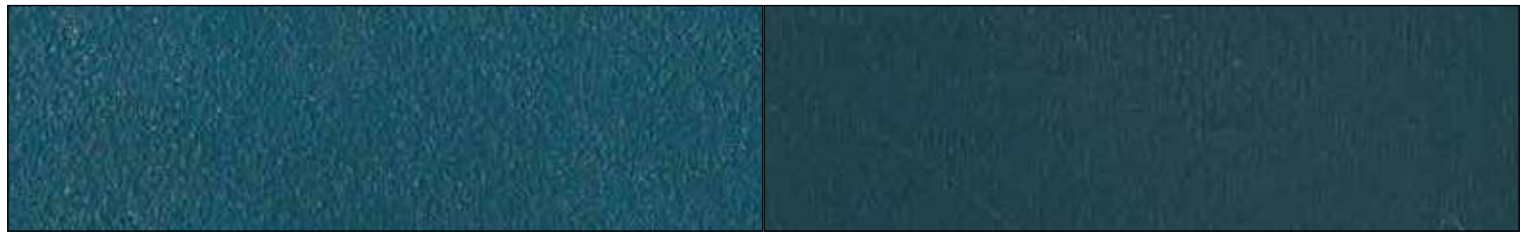
F

FIJI BL

W

BLUE

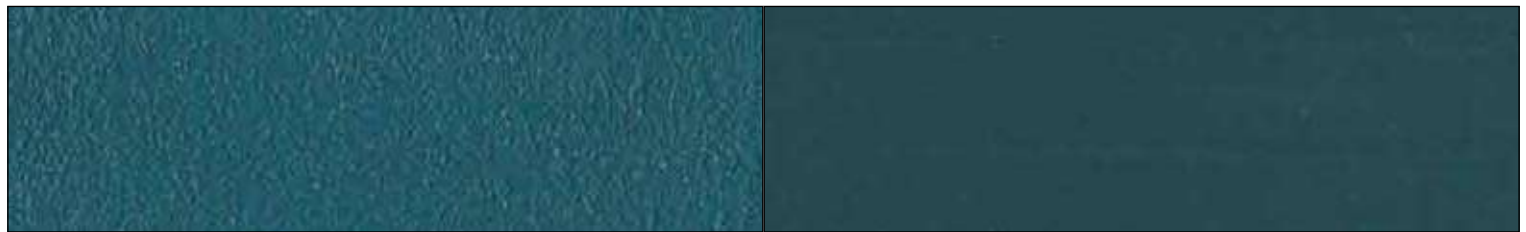
base natural
natural base



F

CUBA BL

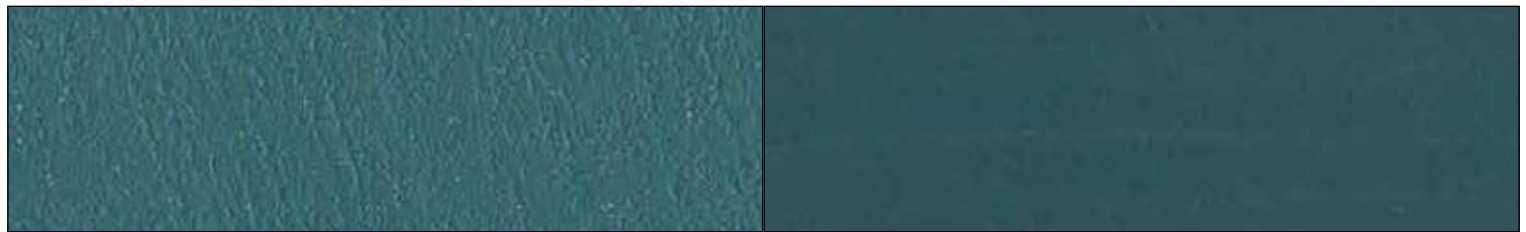
W



F

HAWAII BL

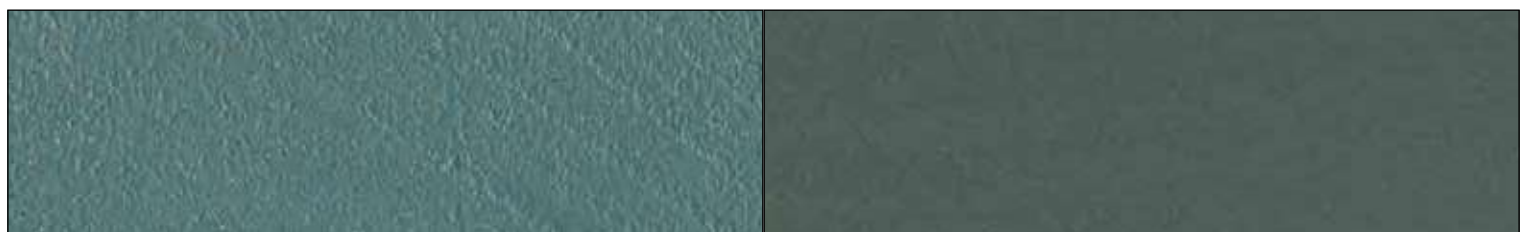
W



F

ZANTE BL

W



F

THAITI BL

W



F

FIJI BL

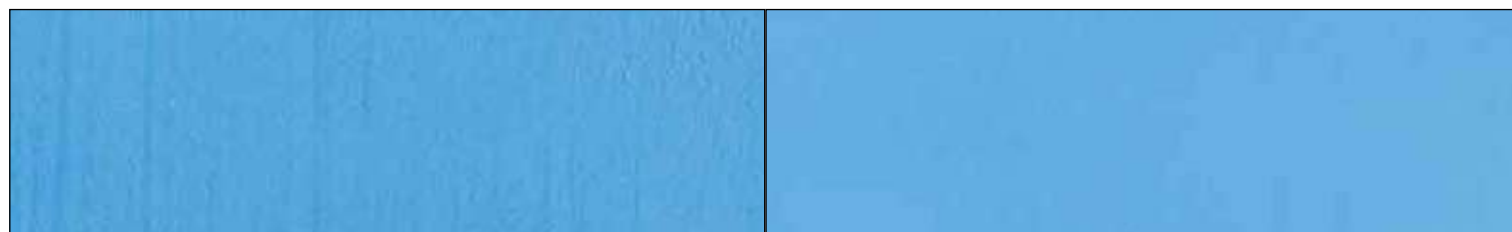
W

Due to the printing processes involved, the colours should be taken as merely indicative of the shades of the actual product.

SCELTA **CROMATICA**

BLU COBALTO

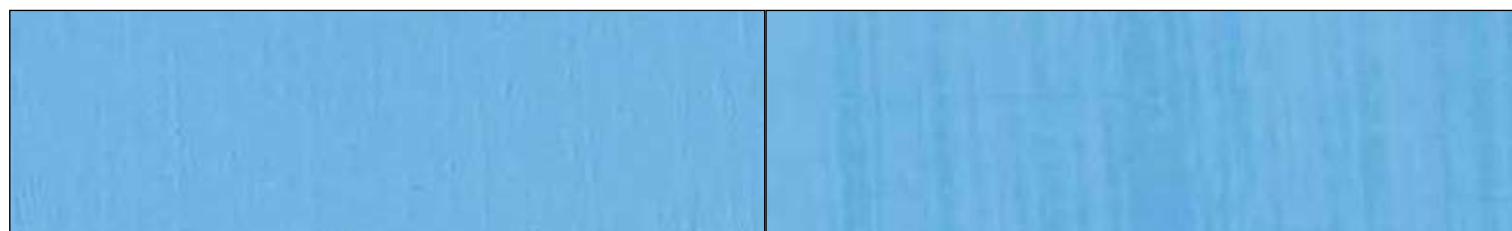
base bianca
white base



F

VOLGA CO

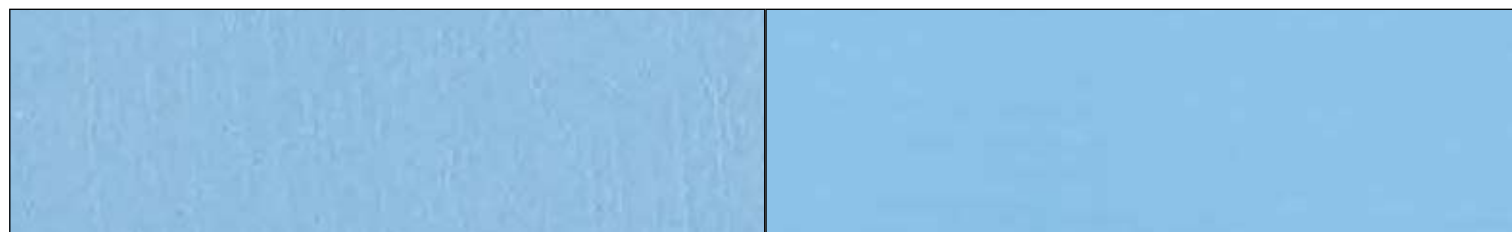
W



F

DANUBIO CO

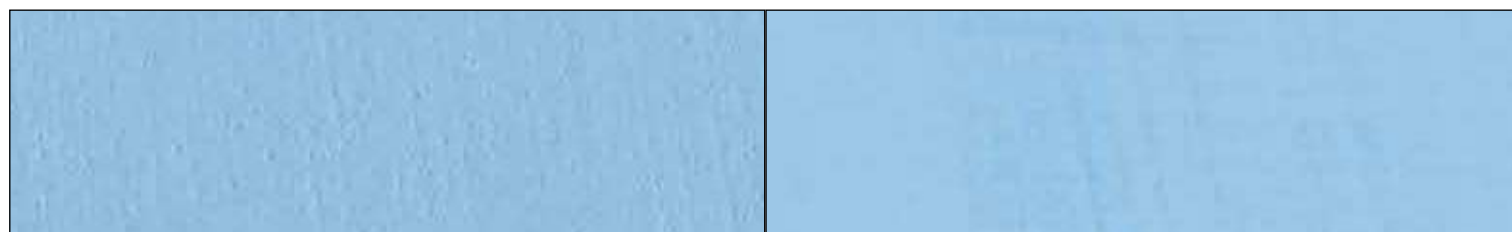
W



F

SENNA CO

W



F

RENO CO

W



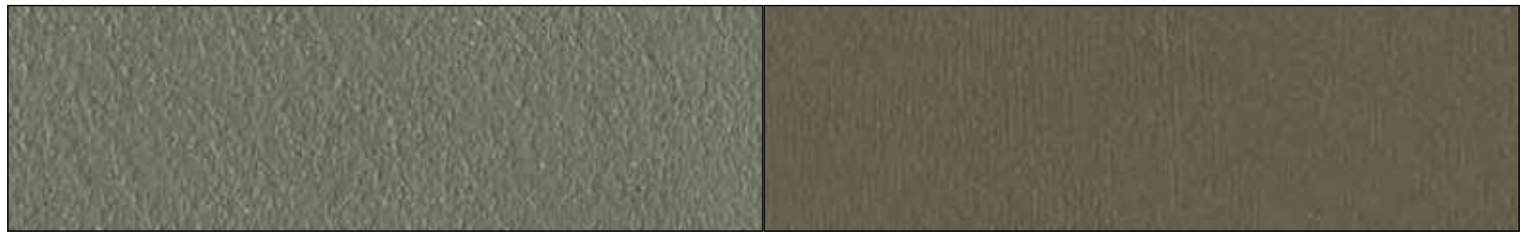
F

MANHATTAN CO

W

COBALT BLUE

base natural
natural base



F

VOLGA CO

W



F

DANUBIO CO

W



F

SENNА CO

W



F

RENO CO

W



F

MANHATTAN CO

W

GRIGIO

base bianca
white base



F

LONDON GR

W



F

MOSCOW GR

W



F

ZURICH GR

W



F

NEW YORK GR

W



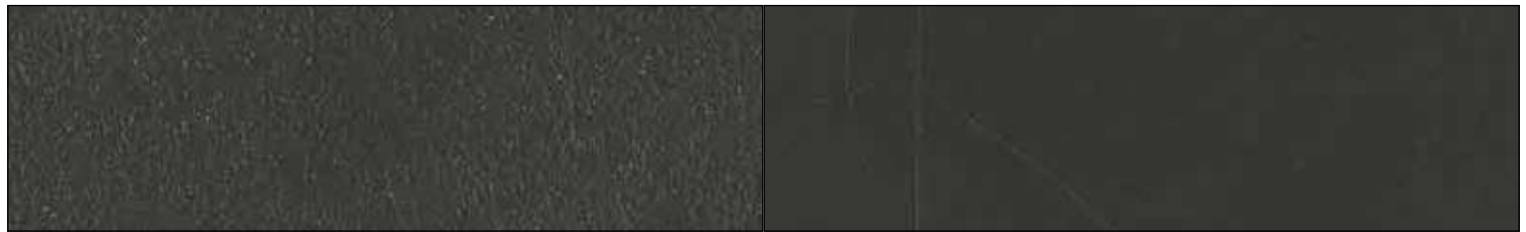
F

BERLIN GR

W

GREY

base natural *natural base*



F

LONDON GR

W



F

MOSCOW GR

W



F

ZURICH GR

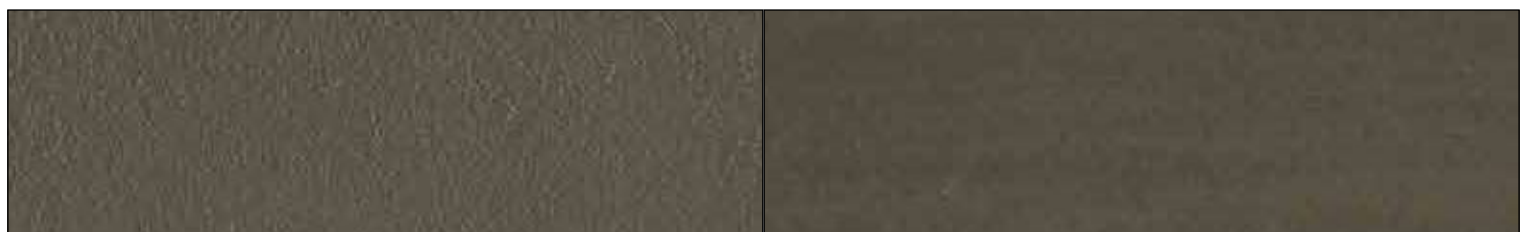
W



F

NEW YORK GR

W



F

BERLIN GR

W

GRIGIO

base bianca
white base



F

BOSTON GR

W



F

PARIS GR

W



F

VENEZIA GR

W



F

SEOUL GR

W



F

MILANO GR

W

GREY

base natural *natural base*



F

BOSTON GR

W



F

PARIS GR

W



F

VENEZIA GR

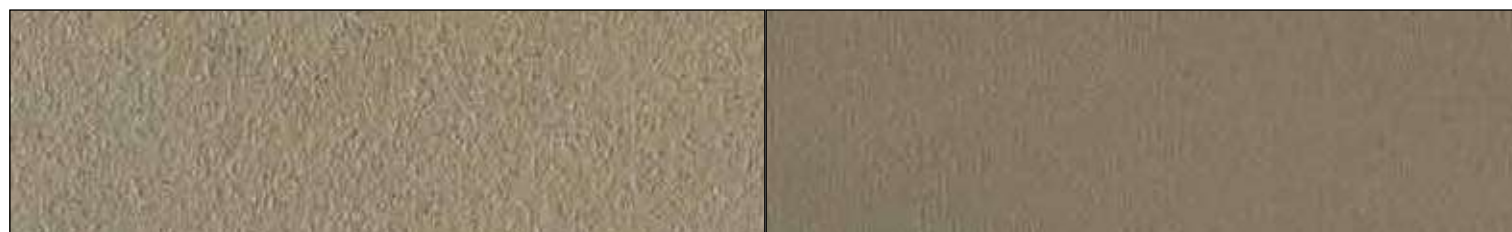
W



F

SEOUL GR

W



F

MILANO GR

W

MARRONE

base bianca
white base



F

CHOCOLATE BR

W



F

WESTERN BR

W



F

CANYON BR

W



F

COCOA BR

W



F

SAND BR

W

BROWN

base natural
natural base



F

CHOCOLATE BR

W



F

WESTERN BR

W



F

CANYON BR

W



F

COCOA BR

W



F

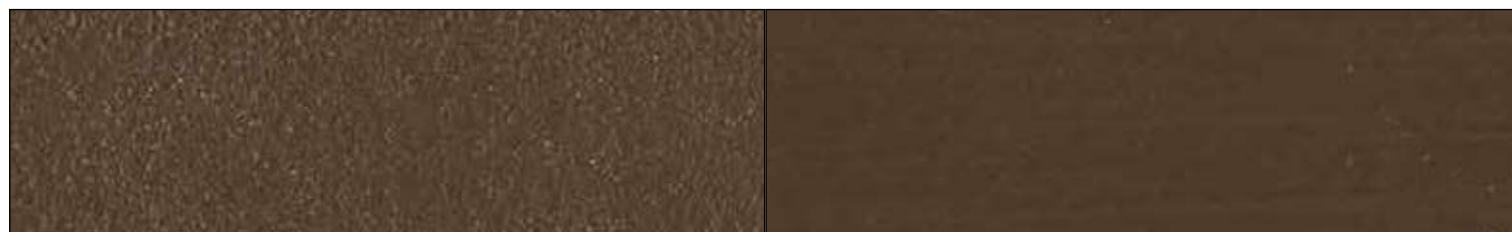
SAND BR

W

SCELTA **CROMATICA**

TESTA DI MORO

base bianca
white base



F

MOKA DB

W



F

TOBACCO DB

W



F

COFFEE DB

W



F

PEPPER DB

W



F

KOLA DB

W

DARK BROWN

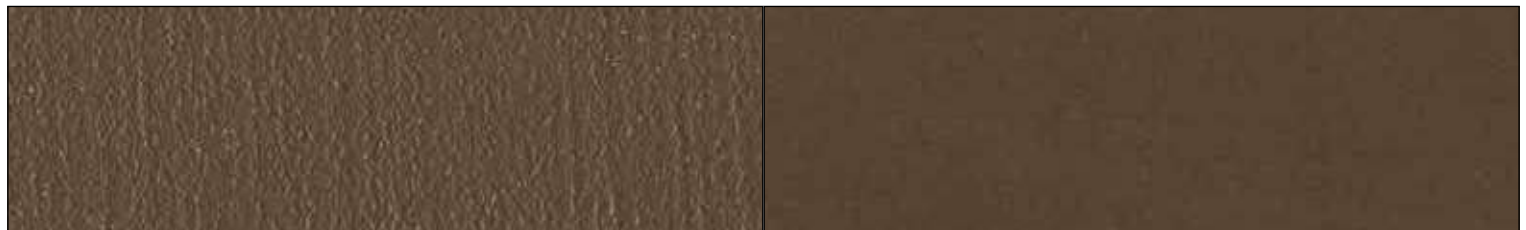
base natural
natural base



F

MOKA DB

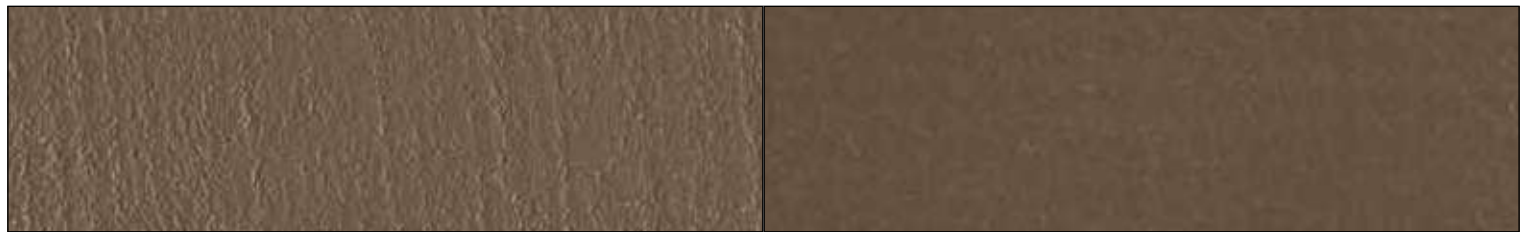
W



F

TOBACCO DB

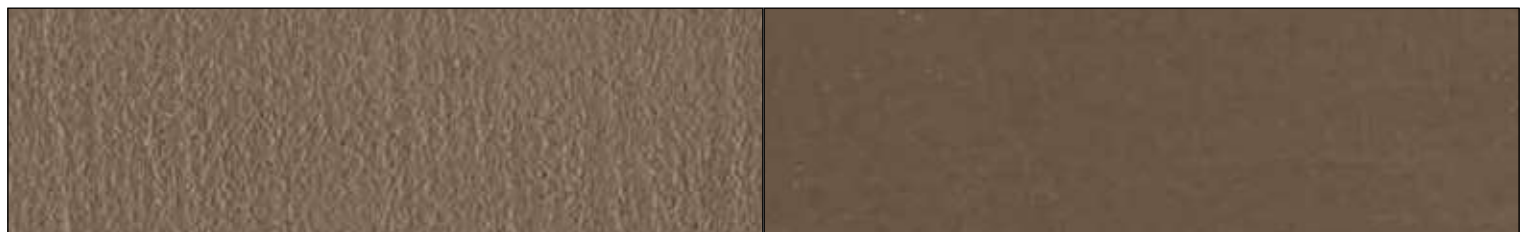
W



F

COFFEE DB

W



F

PEPPER DB

W



F

KOLA DB

W

ROSSO

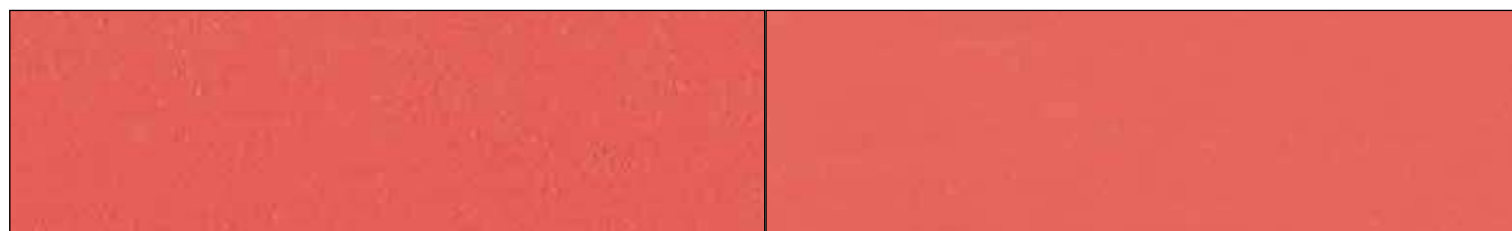
base bianca
white base



F

FUEGO RE

W



F

ETNA RE

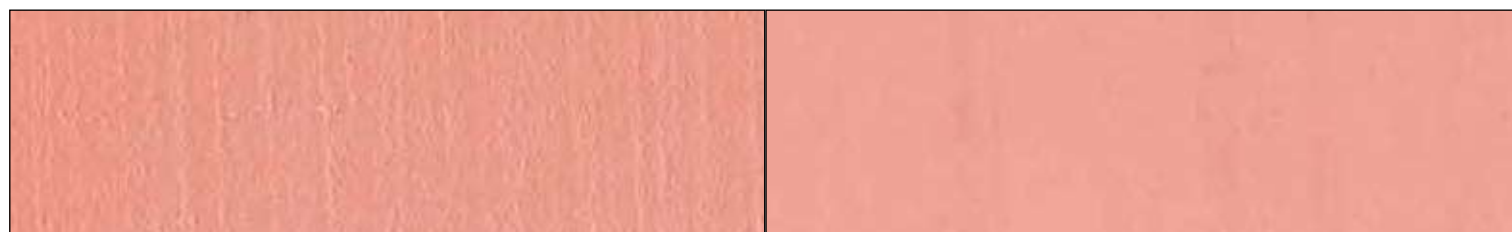
W



F

JAVA RE

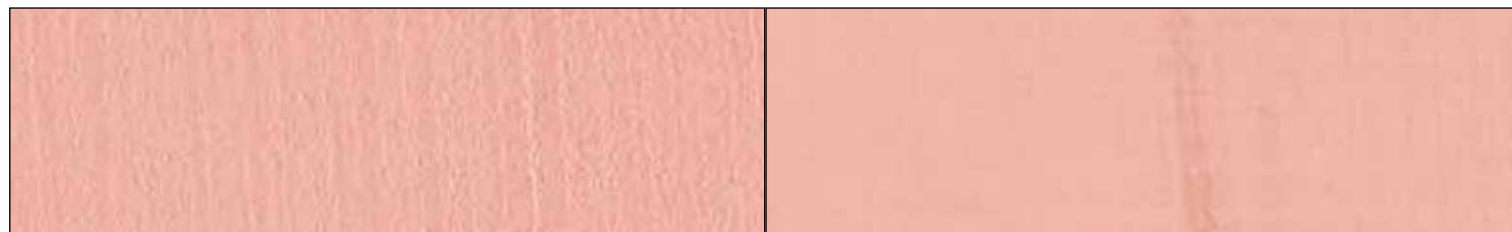
W



F

VESUVIO RE

W



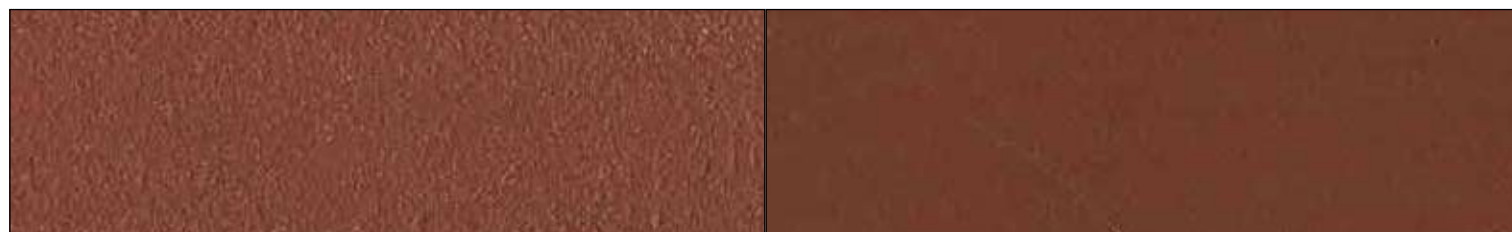
F

TENERIFE RE

W

RED

base natural *natural base*



F

FUEGO RE

W



F

ETNA RE

W



F

JAVA RE

W



F

VESUVIO RE

W



F

TENERIFE RE

W

base bianca
white base



F

BLACK FOREST GN

W



F

GREEN MOUNTAIN GN

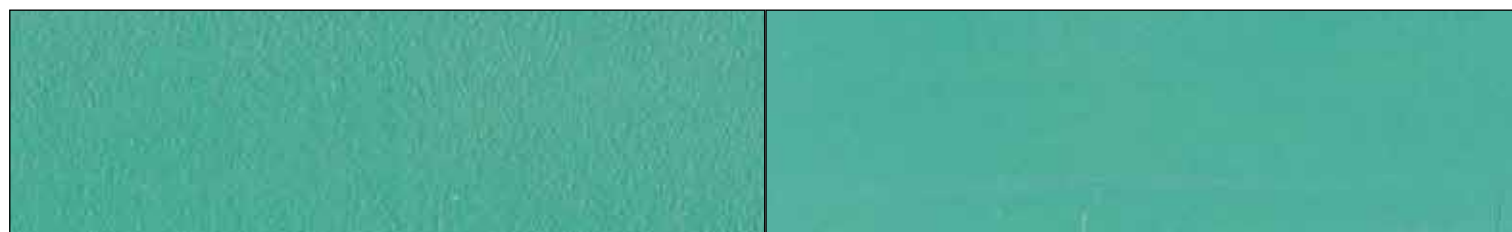
W



F

BORNEO GN

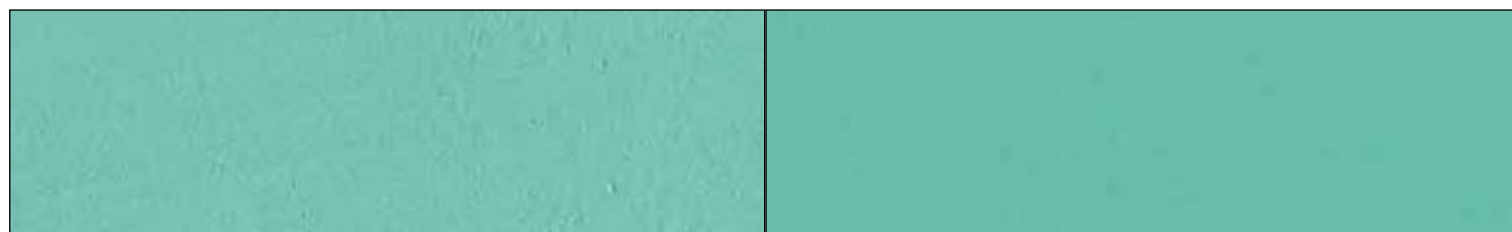
W



F

SEQUOIA GN

W



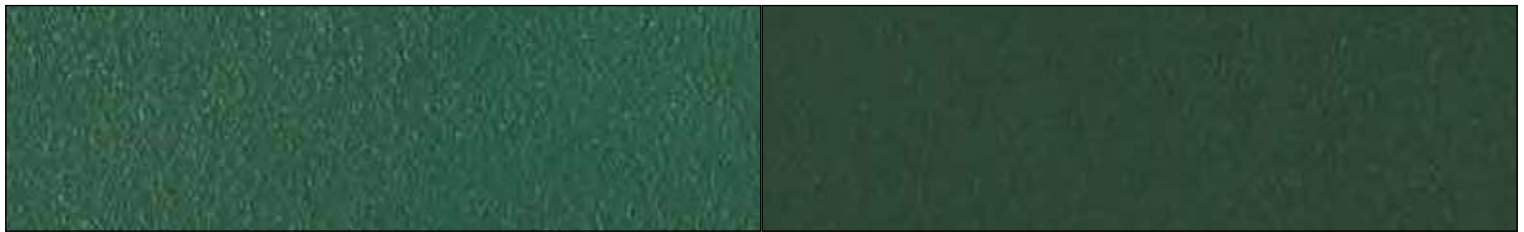
F

BAMBOO GN

W

GREEN

base natural *natural base*



F

BLACK FOREST GN

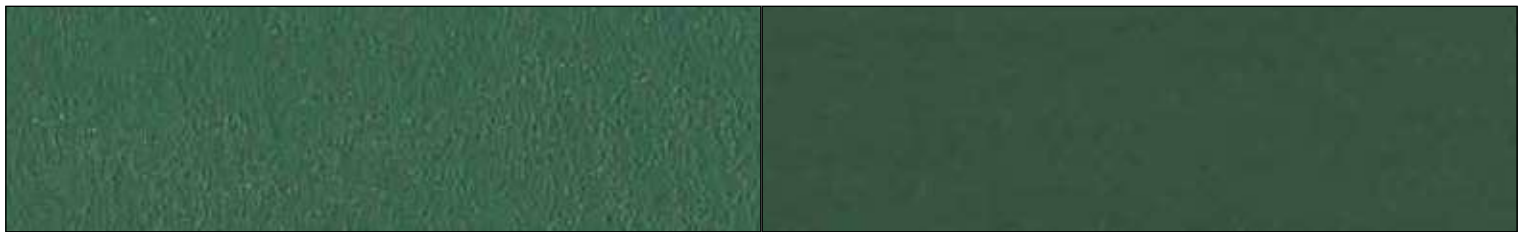
W



F

GREEN MOUNTAIN GN

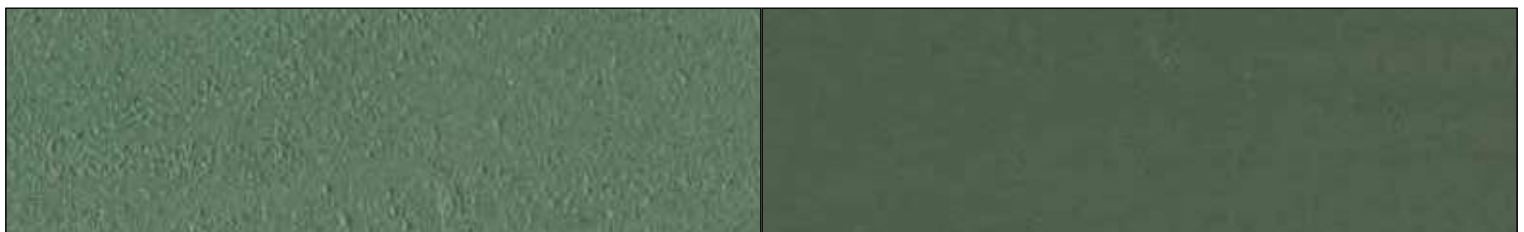
W



F

BORNEO GN

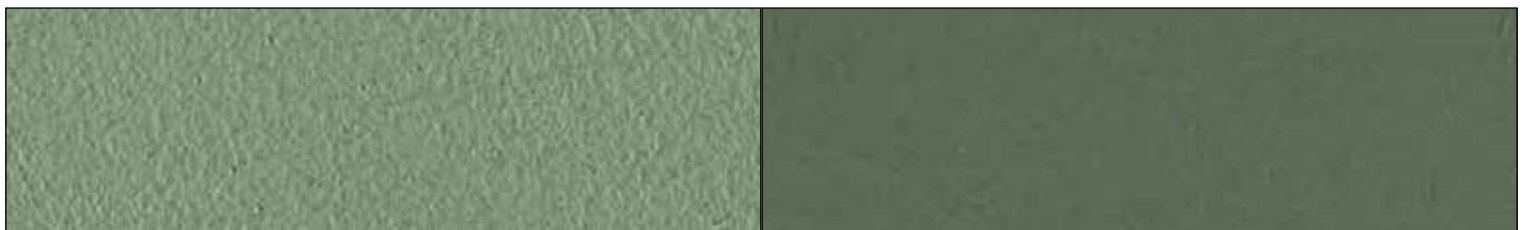
W



F

SEQUOIA GN

W



F

BAMBOO GN

W

GIALLO VIVO

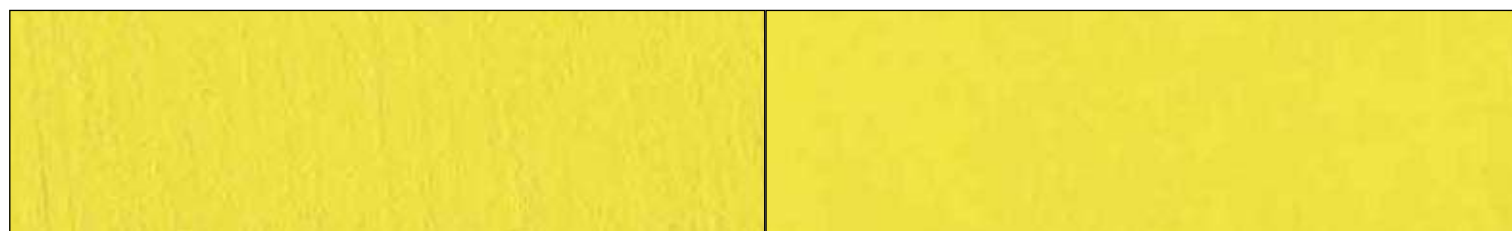
base bianca
white base



F

MIMOSA YL

W



F

SUNSHINE YL

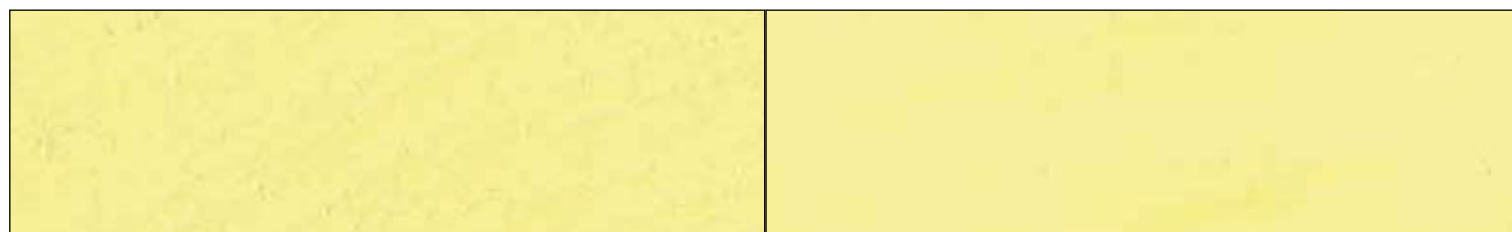
W



F

SUMMER YL

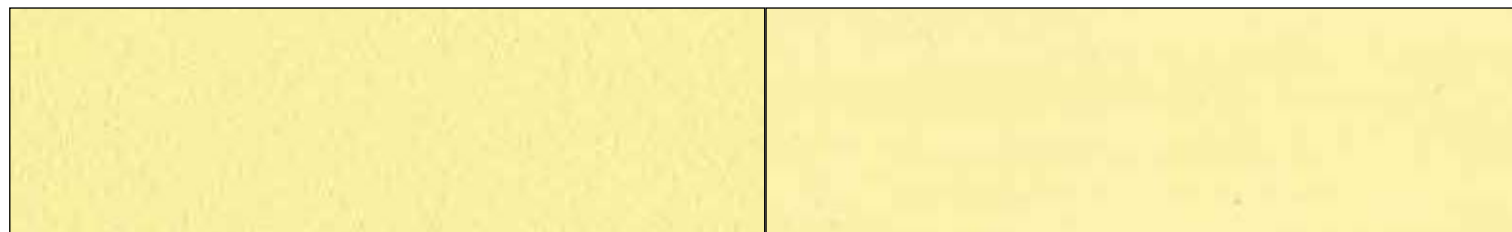
W



F

VANILLA YL

W



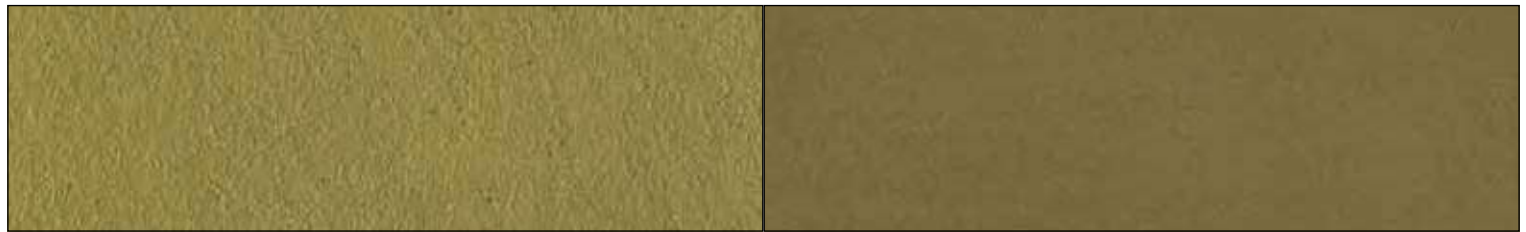
F

MAIZE YL

W

BRIGHT YELLOW

base natural
natural base



F

MIMOSA YL

W



F

SUNSHINE YL

W



F

SUMMER YL

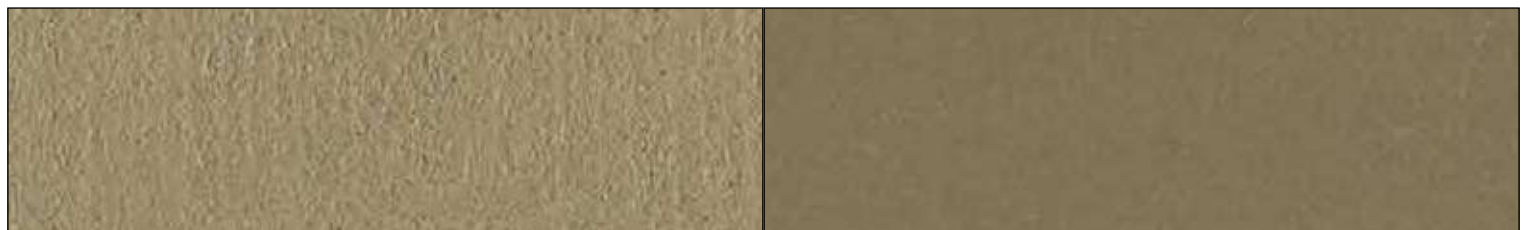
W



F

VANILLA YL

W



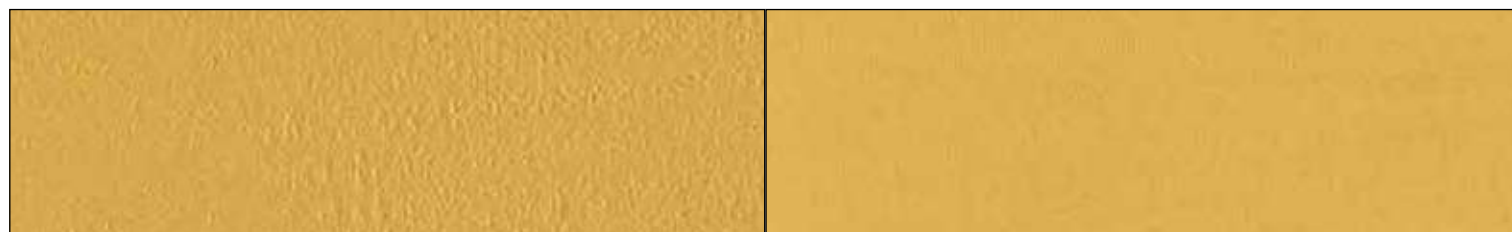
F

MAIZE YL

W

GIALLO OCRA

base bianca
white base



F

SAFRAN YO

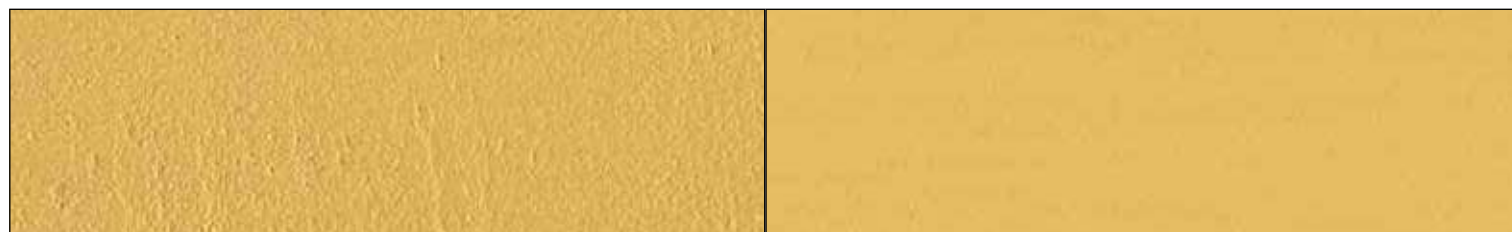
W



F

SUNFLOWER YO

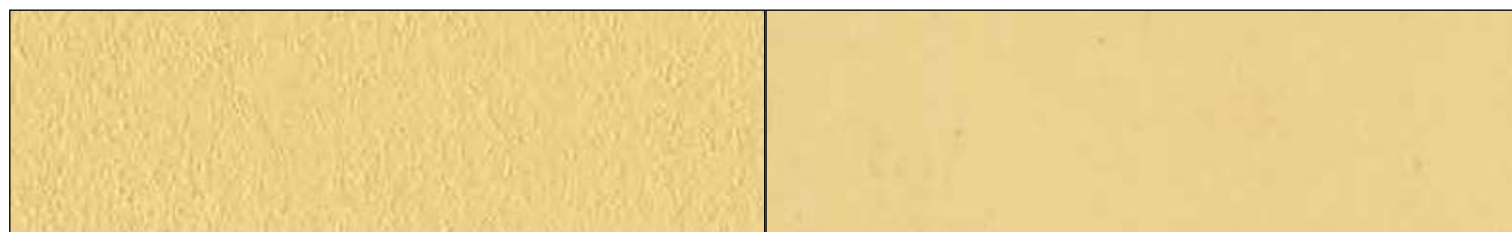
W



F

AMBER YO

W



F

MANGO YO

W



F

PYRAMID YO

W

OCHRE YELLOW

base natural
natural base



F

SAFRAN YO

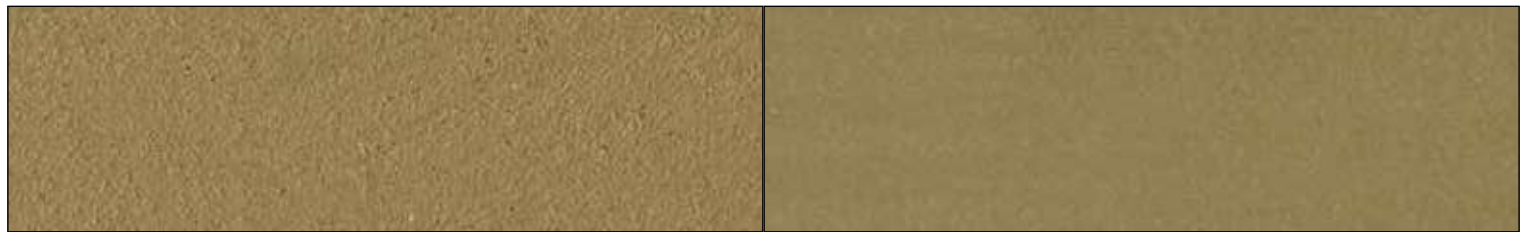
W



F

SUNFLOWER YO

W



F

AMBER YO

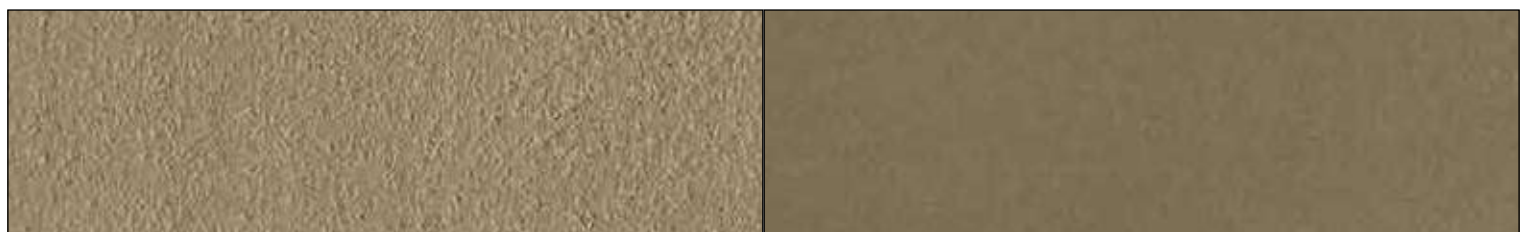
W



F

MANGO YO

W



F

PYRAMID YO

W



REFERENZE

REFERENCES









B



Showroom IDW ITALIA
(Chiavazza - Biella - Italia)
IDW ITALIA Showroom
(Chiavazza - Biella - Italy)



A

Rivendita Simonetti (Civitanova Marche - Macerata - Italia)
Simonetti dealer (Civitanova Marche - Macerata - Italy)

B

Rivendita Vallati (Castel Del Piano - Grosseto - Italia)
Vallati dealer (Castel Del Piano - Grosseto - Italy)





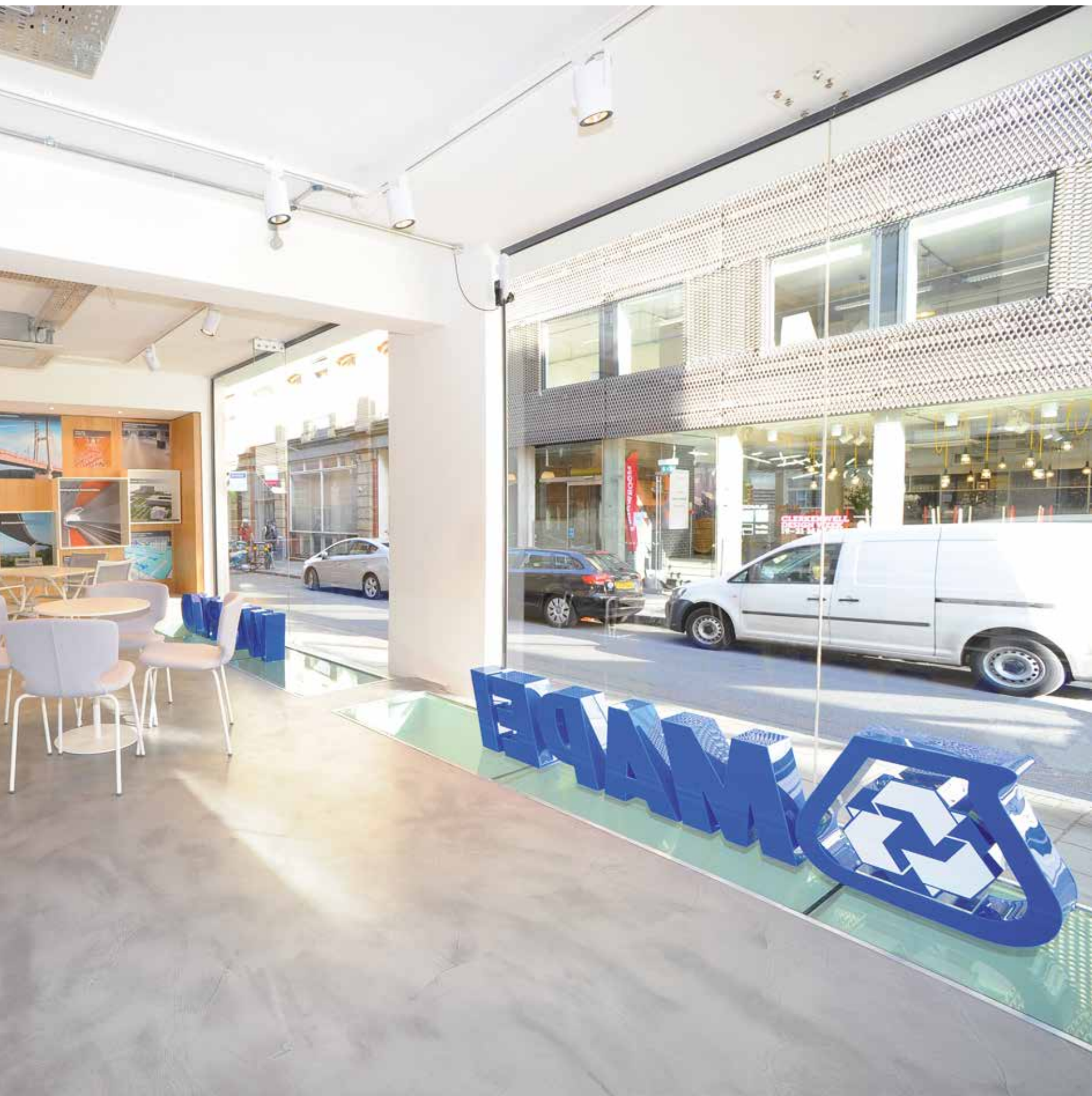
A



B

A B

**Specification Centre “Mapei World”
(Londra - UK)**
“Mapei World” Specification Centre
(London - UK)





A B C

**Petrof Gallery
(Hradec Kralove - Repubblica Ceca)**

Petrof Gallery
(Hradec Kralove - Czech Republic)





A



B



C

A B C

**Showroom Saccaro
(Porto Alegre - Brasile)**
Saccaro Showroom
(Porto Alegre - Brasil)

D E

**Uffici Wisma Lafarge
(Petaling Jaya - Malesia)**
Wisma Lafarge offices
(Petaling Jaya - Malaysia)





A



B



C

A B C

**Zhongnan Group Office @ Shanghai
(Shanghai - Cina)**

Zhongnan Group Office @ Shanghai
(Shanghai - China)







B

A B

Thrudesign Wood DIY Workshop (Pechino - Cina)
Thrudesign Wood DIY Workshop (Beijing - China)





B



C

A B C

**Museo della Scienza e della Tecnologia
"Leonardo Da Vinci" (Milano - Italia)**
"Leonardo Da Vinci" Museum of Science
and Technology (Milan - Italy)



A

**Galleria d'Arte Moderna e
Contemporanea
(Repubblica di San Marino)**

Modern and Contemporary Art Gallery
(Republic of San Marino)

B C

**Museo del Carnevale di Sciacca
(Sciacca - Agrigento - Italia)**

Sciacca Carnival Museum
(Sciacca - Agrigento - Italy)



B



C





A B

Ristorante "A Mano" (Atene - Grecia)
"A Mano" restaurant (Athens - Greece)





A B

Ristorante Oyster Fish
(Termoli - Campobasso - Italia)
Oyster Fish Restaurant
(Termoli - Campobasso - Italy)



A



B

A B C

Park Zaryadye (Mosca - Russia)
Park Zaryadye (Moscow - Russia)







A B C

**Santa Barbara Eco Beach Resort
(Ponta Delgada - Portugal)**

Santa Barbara Eco Beach Resort
(Ponta Delgada - Portugal)



A



B



C



D



A B C D

**Santa Barbara Eco Beach Resort
(Ponta Delgada - Portugal)**

Santa Barbara Eco Beach Resort
(Ponta Delgada - Portugal)

A B C D

Hotel Ristorante "Villa Natia"
(Mottola - Taranto - Italia)
"Villa Natia" Restaurant Hotel
(Mottola - Taranto - Italy)









B



C

A B C

Hotel Ristorante "Villa Natia"
(Mottola - Taranto - Italia)
"Villa Natia" Restaurant Hotel
(Mottola - Taranto - Italy)





A B C

Residenze Karma Line (Mosca - Russia)
Karma Line Residences (Moscow - Russia)



A

A
White Exclusive Suites & Villas (Lagoa - Portugal)
White Exclusive Suites & Villas (Lagoa - Portugal)

